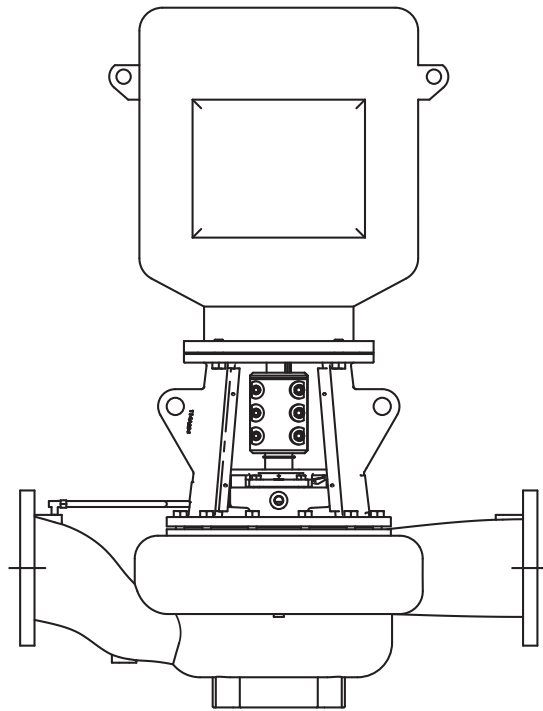


382A-SC SERIES SPLIT COUPLED REPAIR PARTS INDEX



READ AND UNDERSTAND THE PUMP AND MOTOR
INSTRUCTIONS BEFORE ATTEMPTING TO INSTALL,
DISASSEMBLE OR REPAIR THE PUMP

**380 SERIES
MODEL 382A-SC**

TABLE OF CONTENTS

PUMP MODEL	DESCRIPTION	PAGE
382A	1-1/2 x 1-1/2 x 7 THRU 4 x 4 x 7A &B	4
382A	1-1/2 x 1-1/2 x 9B THRU 6 x 6 x 9	5-6
382A	4 x 4 x 11 THRU 8 x 8 x 11	7-8
382A	2 x 2 x 12 THRU 8 x 8 x 12	9-10
382A	8 x 8 x 15 AND 10 x 10 x 15	11

NOTES: MODEL 382A-SC PUMPS.

FOR PUMPS 12" & SMALLER

PART NO. 9, 9A, 9B, 9C, 10, 11, 12, 25 AND 27 ARE LISTED WITH A LARGE LETTER "S" OR "L" .. 9" PUMPS ARE BUILT ON TWO SHAFT SIZES, "S" INDICATING SMALL AND "L" FOR LARGE.

TO DETERMINE WHEN TO USE "S" OR "L" PARTS, IN ADDITION TO THE PUMP SIZE AND SERIAL NUMBER, IT IS ALSO NECESSARY TO HAVE THE MOTOR FRAME NUMBER.

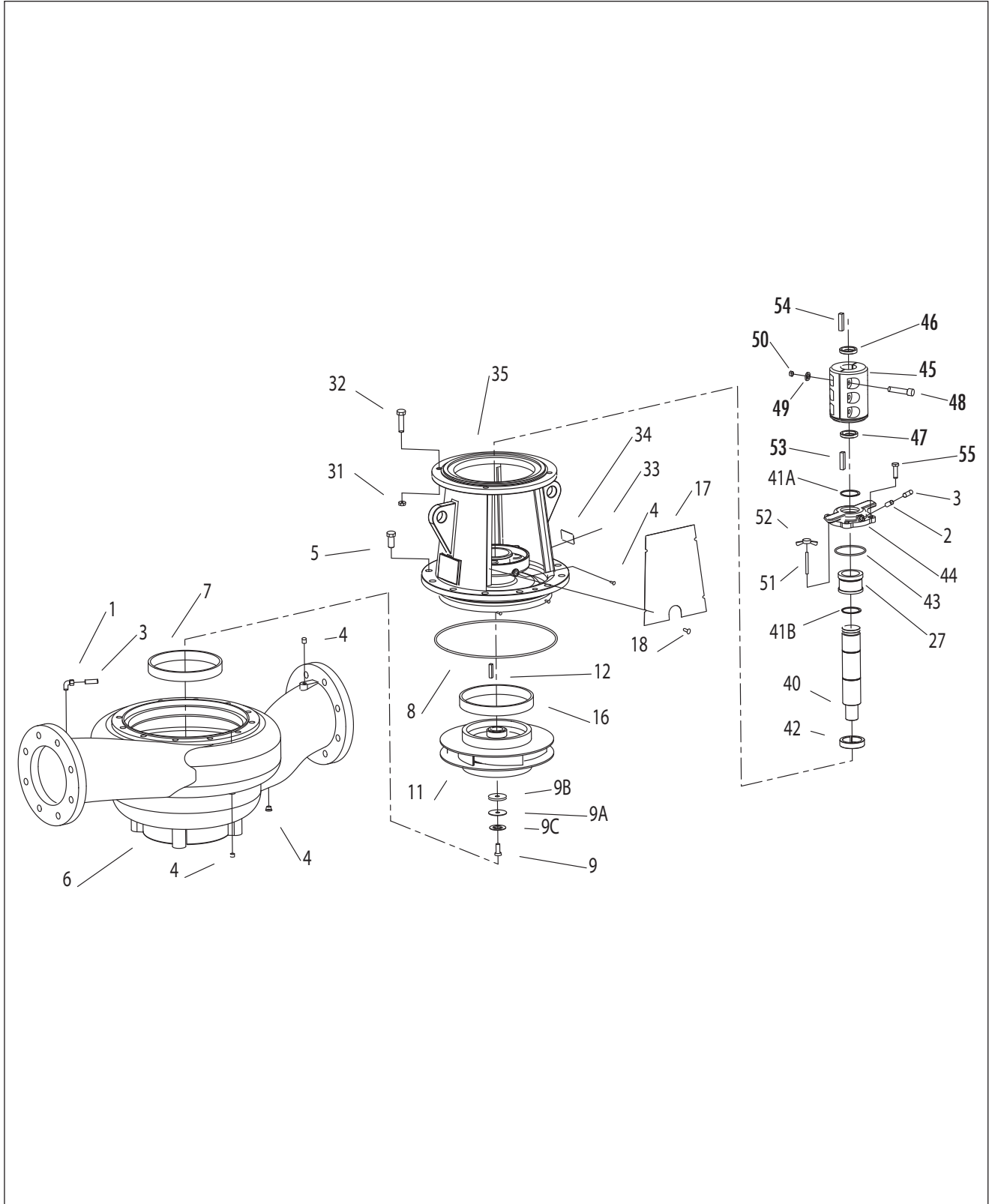
MOTOR FRAME 256 HP AND SMALLER USE "S" PARTS.

MOTOR FRAME 284 HP TO 405 HP USE "L" PARTS.

MOTOR FRAME 444/445HP IS ONLY FOR 15" PUMPS.

**380 SERIES
MODEL 382A
PIECE NUMBERS**

SECTION 382P PAGE 3
DATED DECEMBER 2005



**380 SERIES
 MODEL 382A-SC
 1-1/2 x 1-1/2 x 7 – 4 x 4x7B
 PARTS LIST**

PC. NO.	DESCRIPTION	QTY	PART NO.	MATERIAL			
				B.F.	A.B.	A.I.	S.S.
1	COMP. ELBOW	1	868-3660	190		087	
2	COMP. CONNECTOR	1	868-3359	190		087	
3	TUBING	1	872-0124	175		087	
4	PIPE PLUG	4	600-0002	087		087	
5	CAPSCREW	8	168-0381	082		082	
6	CASING						
	2x7	1	180-2573	010		010	
	2-1/2x7	1	180-2574	010		010	
	3x7A&7B	1	180-2560	010		010	
7	WEAR RING						
	2x7	1	676-1151	208		010	
	2-1/2x7	1	676-1152	208		010	
	3x7A&7B	1	676-1152	208		010	
8	WEAR RING						
	4x7A&7B	1	180-2561	010		010	
	4x7A&7B	1	676-1154	208		010	
	4x7A&7B	1	676-1154	208		010	
8	GASKET	1	364-1014	603		603	
9	IMPELLER SCREW - S	1	168-0382	113		113	
9A	WASHER - S	1	908-0603	087		087	
9B	GASKET - S	1	364-2034	603		603	
9C	CAPSCREW SEAL - S	1	908-1290	999		999	
11	IMPELLER - S						
	2x7	1	443-0407	225		010	
	2-1/2x7	1	443-0411	225		010	
	3x7A	1	443-2034	225		010	
	3x7B	1	443-0417	225		010	
	4x7A	1	443-0425	225		010	
11	IMPELLER - S*						
	2x7	1	443-0410	225		010	
	2-1/2x7	1	443-0412	225		010	
	3x7A	1	443-1775	225		010	
	3x7B	1	443-0418	225		010	
	4x7A	1	443-0426	225		010	
12	IMPELLER KEY - S	1	472-0201	087		087	
14	WEAR RING						
	2x7	1	676-1146	208		010	
	2-1/2x7	1	676-1133	208		010	
	3x7A&7B	1	676-1133	208		010	
4x7A&7B	1	676-1140	208		010		

*MACHINED FOR OPTIONAL RING #14 & 15

PC. NO.	DESCRIPTION	QTY	PART NO.	MATERIAL			
				B.F.	A.B.	A.I.	S.S.
15	WEAR RING						
	2x7						
15	WEAR RING						
	2-1/2x7	1	676-1133	208		010	
16	WEAR RING						
17	COUPLING GUARD	2	392-0685	087		087	
18	GUARD MOUNTING SCREW	8	168-0298	082		082	
27	SEAL - S	1	712-0907	749		749	
31	HEXNUT						
	143HP-256HP	4	544-0109	080		080	
32	CAPSCREW						
	143HP-256HP	4	168-0388	082		082	
33	SCREW	2	708-0013	365		365	
34	NAMEPLATE	1	532-0045	114		114	
35	BRACKET						
	143HP-256HP	1	116-0607	010		010	
40	SHAFT						
	143HP-256HP	1	728-7504	107			
41A,B	RETAINING RING						
	143HP-256HP	1	676-0271	088		088	
42	THROTTLE BUSHING						
	143HP-256HP	1	136-1676	560		560	
43	GLAND O-RING	1	364-0423	457		457	
44	GLAND						
	143HP-256HP	1	372-0550	010		010	
45	SPLIT COUPLING						
	143HP-145HP	1	256-2877	320		320	
	182HP-256HP	1	256-2879	320		320	
46	ANNULAR RING						
	143HP-145HP	1	472-1165	087		087	
	182HP-256HP	1	472-1164	087		087	
47	ANNULAR RING						
	143HP-256HP	1	472-1164	087		087	
48	CAPSCREW	6	168-0169	082		082	
49	LOCK WASHER	6	908-0163	088		088	
50	HEXNUT	6	544-0113	080		080	
51	STUD	2	808-0111	080		080	
52	WINGNUT	2	544-2298	080		080	
53	PUMP CPLG KEY						
	143HP-256HP	1	472-0240	087		087	
54	MOTOR CPLG KEY						
	143HP-145HP	1	472-0201	087		087	
	182HP-256HP	1	472-0240	087		087	
55	CAPSCREW	4	168-0494	082		082	

**380 SERIES
MODEL 382A-SC**

**1-1/2 x 1-1/2 x 9B – 6 x 6 x 9
PARTS LIST**

PC. NO.	DESCRIPTION	QTY	PART NO.	MATERIAL			
				B.F.	A.B.	A.I.	S.S.
1	COMP. ELBOW	1	868-3660	190		087	
2	COMP. CONNECTOR	1	868-3359	190		087	
3	TUBING	1	872-0124	175		087	
4	PIPE PLUG	4	600-0002	087		087	
5	CAPSCREW	8	168-0489	082		082	
6	CASING						
	1-1/2x9B	1	180-2173	010		010	
	2x9A&9B	1	180-2174	010		010	
	2x9C	1	180-2517	010		010	
	2-1/2x9	1	180-2575	010		010	
	3x4x9	1	180-2518	010		010	
	3x9A	1	180-2177	010		010	
	3x9B	1	180-2178	010		010	
	4x5x9	1	180-2519	010		010	
	4x9A&9B	1	180-2181	010		010	
	5x9	1	180-2576	010		010	
6x9	1	180-2577	010		010		
7	WEAR RING						
	1-1/2x9B	1	676-1150	208		010	
	2x9, 9A&9B	1	676-1151	208		010	
	2-1/2x9	1	676-1152	208		010	
	3x4x9	1	676-2104	208		010	
	3x9A&9B	1	676-1152	208		010	
	4x5x9, 9A&9B	1	676-1154	208		010	
	5x9	1	676-1155	208		010	
6x9	1	676-1155	208		010		
8	GASKET	1	364-1015	603		603	
9	IMPELLER SCREW						
	S	1	168-0382	113		113	
	L	1	168-0490	113		113	
9A	WASHER						
	S	1	908-0603	087		087	
	L	1	908-0604	087		087	
9B	GASKET						
	S	1	364-2034	603		603	
L	1	364-2035	603		603		
9C	CAPSCREW SEAL						
	S	1	908-1290	999		999	
L	1	908-1292	999		999		
11	IMPELLER - S						
	1-1/2x9B	1	443-0431	225		010	
	2x9A, 9C	1	443-0437	225		010	
	2x9B	1	443-0435	225		010	
	2-1/2x9	1	443-0441	225		010	
	3x4x9	1	443-2748	225		010	

PC. NO.	DESCRIPTION	QTY	PART NO.	MATERIAL			
				B.F.	A.B.	A.I.	S.S.
11	IMPELLER - S						
	3x9A	1	443-0441	225		010	
	3x9B	1	443-0445	225		010	
	4x5x9	1	443-2750	225		010	
	4x9A	1	443-1766	225		010	
	4x9B	1	443-1762	225		010	
	5x9	1	443-0457	225		010	
6x9	1	443-0465	225		010		
11	IMPELLER - L						
	2x9C	1	443-0439	225		010	
	2-1/2x9	1	443-0443	225		010	
	3x4x9	1	443-2749	225		010	
	3x9A	1	443-0443	225		010	
	3x9B	1	443-0447	225		010	
	4x5x9	1	443-2751	225		010	
	4x9B	1	443-1764	225		010	
	5x9	1	443-0459	225		010	
6x9	1	443-0467	225		010		
11	IMPELLER - S*						
	1-1/2x9B	1	443-0432	225		010	
	2x9A	1	443-0438	225		010	
	2x9B	1	443-0436	225		010	
	2x9C	1	443-0438	225		010	
	2-1/2x9	1	443-0422	225		010	
	3x9A	1	443-0442	225		010	
	3x9B	1	443-0446	225		010	
	4x9A	1	443-1767	225		010	
	5x9	1	443-0458	225		010	
	6x9	1	443-0466	225		010	
11	IMPELLER - L*						
	2x9C	1	443-0440	225		010	
	2-1/2x9	1	443-0444	225		010	
	3x9A	1	443-0444	225		010	
	3x9B	1	443-0448	225		010	
	4x9B	1	443-1765	225		010	
	5x9	1	443-0460	225		010	
	6x9	1	443-0468	225		010	
12	IMPELLER KEY						
	S	1	472-0201	087		087	
L	1	472-0247	087		087		

*MACHINED FOR OPTIONAL RING #14 & 15

380 SERIES
MODEL 382A-SC
1-1/2 x 1-1/2 x 9B – 6 x 6 x 9
PARTS LIST

PC. NO.	DESCRIPTION	QTY	PART NO.	MATERIAL				
				B.F.	A.B.	A.I.	S.S.	
14	WEAR RING							
	1-1/2x9B	1	676-1145	208		010		
	2x9A, B & C	1	676-1146	208		010		
	2-1/2x9	1	676-1133	208		010		
	3x9A&B	1	676-1133	208		010		
	4x9A&B	1	676-1140	208		010		
	5x9	1	676-1141	208		010		
	6x9	1	6761141	208		010		
15	WEAR RING							
	1-1/2x9B		NOT REQUIRED					
	2x9A, B & C		NOT REQUIRED					
	2-1/2x9	1	676-1133	208		010		
	3x9A&B	1	676-1133	208		010		
	4x9A&B	1	676-1156	208		010		
	5x9	1	676-1156	208		010		
	6x9	1	676-1156	208		010		
16	WEAR RING							
	1-1/2x9B		NOT REQUIRED					
	2x9A, B & C		NOT REQUIRED					
	2-1/2x9	1	676-0003	010		010		
	3x9A&B	1	676-0003	010		010		
	4x9A&B		NOT REQUIRED					
17	COUPLING GUARD							
	S	2	392-0679	087		087		
	L	2	392-0680	087		087		
18	GUARD MOUNTING SCREW	8	168-0298	082		082		
27	SEAL							
	S	1	712-0907	749		749		
	L	1	712-0910	749		749		
31	HEXNUT							
	143HP-256HP	4	544-0109	080		080		
	284HP-405HP	4	544-0115	080		080		
32	CAPSCREW							
	143HP-256HP	4	168-0388	082		082		
	284HP-405HP	4	168-0572	082		082		
33	SCREW	2	708-0013	365		365		
34	NAMEPLATE	1	532-0045	114		114		
35	BRACKET							
	143HP-256HP (S)	1	116-0610	010		010		
	284HP-405HP (L)	1	116-0606	010		010		
40	SHAFT							
	143HP-256HP	1	728-7504	113		133		
	284HP-405HP	1	728-7502	113		133		

PC. NO.	DESCRIPTION	QTY	PART NO.	MATERIAL			
				B.F.	A.B.	A.I.	S.S.
41	RETAINING RING						
	143HP-256HP	1	676-0271	088		088	
	284HP-405HP	1	676-0277	088		088	
42	THROTTLE BUSHING						
	143HP-256HP	1	136-1676	560		560	
	284HP-405HP	1	136-1675	560		560	
43	GLAND O-RING	1	364-0423	457		457	
44	GLAND						
	143HP-256HP	1	372-0550	010		010	
	284HP-405HP	1	372-0549	010		010	
45	SPLIT COUPLING						
	143HP-145HP	1	256-2877	320		320	
	182HP-256HP	1	256-2879	320		320	
	284HP-405HP	1	256-2875	320		320	
46	ANNULAR RING						
	143HP-145HP	1	472-1165	087		087	
	182HP-256HP	1	472-1164	087		087	
	284HP-405HP	1	472-1163	087		087	
47	ANNULAR RING						
	143HP-256HP	1	472-1164	087		087	
	284HP-405HP	1	472-1163	087		087	
48	CAPSCREW						
	143HP-256HP	6	168-0123	082		082	
	284HP-405HP	6	168-0169	082		082	
49	LOCK WASHER						
	143HP-256HP	6	908-0160	088		088	
	284HP-405HP	6	908-0163	088		088	
50	HEXNUT						
	143HP-256HP	6	544-0107	080		080	
	284HP-405HP	6	544-0113	080		080	
51	THREADED ROD / STUD						
	143HP-256HP	2	808-5154	080		080	
	284HP-405HP	2	808-5155	080		080	
52	WINGNUT	2	544-2298	080		080	
53	SHAFT KEY						
	143HP-256HP	1	472-0241	087		087	
	284HP-405HP	1	472-0319	087		087	
54	SHAFT KEY						
	143HP-145HP	1	472-0201	087		087	
	182HP-256HP	1	472-0241	087		087	
	284HP-405HP	1	472-0326	087		087	
55	CAPSCREW	4	168-0494	082		082	

**380 SERIES
MODEL 382A-SC
4 x 4 x 11 – 8 x 8 x 11
PARTS LIST**

PC. NO.	DESCRIPTION	QTY	PART NO.	MATERIAL			
				B.F.	A.B.	A.I.	S.S.
1	COMP. ELBOW	1	868-3360	190		087	
2	COMP.CONNECTOR	1	868-3359	190		087	
3	TUBING	1	872-0124	175		087	
4	PIPE PLUG	4	600-0002	087		087	
5	CAPSCREW	8	168-0492	082		082	
6	CASING						
	4x11	1	180-2578	010		010	
	5x11	1	180-2579	010		010	
	6x11	1	180-2580	010		010	
	8x11	1	180-2581	010		010	
7	WEAR RING						
	4x11	1	676-1154	208		010	
	5x11	1	676-1155	208		010	
	6x11	1	676-1684	208		010	
	8x11	1	676-2104	208		010	
8	GASKET	1	364-2109	603		603	
9	CAPSCREW - L	1	168-0490	113		113	
9A	WASHER - L	1	908-0604	087		087	
9B	GASKET - L	1	364-2035	603		603	
9C	CAPSCREW/SEAL - L	1	908-1292	999		999	
11	IMPELLER large						
	4x11	1	443-2400	225		010	
	5x11	1	443-2401	225		010	
	6x11	1	443-2402	225		010	
	8x11	1	443-2402	225		010	
11	IMPELLER - L*						
	4x11	1	443-2428	225		010	
	5x11	1	443-2429	225		010	
	6x11	1	443-2430	225		010	
	8x11	1	443-2430	225		010	
12	IMPELLER KEY - L	1	472-0247	087		087	
14	WEAR RING						
	4x11	1	676-1140	208		010	
	5x11	1	676-1141	208		010	
	6x11	1	676-1143	208		010	
	8x11	1	676-1143	208		010	
15	WEAR RING						
	4x11	1	676-1156	208		010	
	5x11	1	676-1156	208		010	
	6x11	1	676-1156	208		010	
	8x11	1	676-1156	208		010	
16	WEAR RING		NOT REQUIRED				
17	COUPLING GUARD						
	S	2	392-0682	087		087	
	L	2	392-0681	087		087	

PC. NO.	DESCRIPTION	QTY	PART NO.	MATERIAL			
				B.F.	A.B.	A.I.	S.S.
18	GUARD MOUNTING SCREW	8	168-0298	082		082	
27	SEAL - L	1	712-0910	749		749	
31	HEXNUT						
	143HP-256HP	4	544-0109	080		080	
	284HP-405HP	4	544-0115	080		080	
32	CAPSCREW						
	143HP-256HP	4	168-0388	082		082	
	284HP-405HP	4	168-0572	082		082	
33	U DRIVE SCREW	2	708-0013	365		365	
34	NAMEPLATE	1	532-0045	114		114	
35	BRACKET						
	143HP-256HP	1	116-0609	010		010	
	284HP-405HP	1	116-0605	010		010	
40	SHAFT						
	182HP-405HP	1	728-7502	107			
41A,B	RETAINING RING	2	676-0277	088		088	
42	THROTTLE BUSHING						
	182HP-405HP	1	136-1675	560		560	
43	GLAND O-RING	1	364-0423	457		457	
44	GLAND						
	182HP-405HP	1	372-0549	010		010	
45	SPLIT COUPLING						
	143HP-145HP	1	256-2884	320		320	
	182HP-256HP	1	256-2876	320		320	
	284HP-405HP	1	256-2875	320		320	
46	ANNULAR RING						
	143HP-145HP	1	472-1165	087		087	
	182HP-256HP	1	472-1164	087		087	
	284HP-405HP	1	472-1163	087		087	
47	ANNULAR RING						
	143HP-405HP	1	472-1162	087		087	
48	CAPSCREW						
	143HP-256HP	6	168-0123	082		082	
	284HP-405HP	6	168-0169	082		082	
49	LOCK WASHER						
	143HP-256HP	6	908-0160	088		088	
	284HP-405HP	6	908-0163	088		088	
50	HEXNUT						
	143HP-256HP	6	544-0107	080		080	
	284HP-405HP	6	544-0113	080		080	
51	STUD	2	808-5155	080		080	
52	WINGNUT	2	544-2298	080		080	

*MACHINED FOR OPTIONAL RING #14 & 15

380 SERIES
MODEL 382A-SC
4 x 4 x 11 – 8 x 8 x 11
PARTS LIST

PC. NO.	DESCRIPTION	Q T Y	PART NO.	MATERIAL			
				B.F.	A.B.	A.I.	S.S.
53	SHAFT KEY						
	182HP-405HP	1	472-0319	087		087	
54	SHAFT KEY						
	143HP-145HP	1	472-0203	087		087	
	182HP-256HP	1	472-0241	087		087	
	284HP-405HP	1	472-0326	087		087	
55	CAPSCREW	4	168-0494	082		082	

**380 SERIES
MODEL 382A-SC
2 x 2 x 12 – 8 x 8 x 12
PARTS LIST**

SECTION 382P PAGE 9
DATED DECEMBER 2005

PC. NO.	DESCRIPTION	QTY	PART NO.	MATERIAL			
				B.F.	A.B.	A.I.	S.S.
1	COMP. ELBOW	1	868-3660	190		087	
2	COMP. CONNECTOR	1	868-3359	190		087	
3	TUBING	1	872-0124	175		087	
4	PIPE PLUG	4	600-0002	087		087	
5	CAPSCREW	8	168-0491	082		082	
6	CASING						
	2x12	1	180-2175	010		010	
	3x12	1	180-2179	010		010	
	4x12	1	180-2582	010		010	
	5x12	1	180-2583	010		010	
	6x12	1	180-2584	010		010	
	8x12	1	180-2593	010		010	
7	WEAR RING						
	2x12	1	676-1151	208		010	
	3x12	1	676-1152	208		010	
	4x12	1	676-1154	208		010	
	5x12	1	676-1155	208		010	
	6x12	1	676-1684	208		010	
	8x12	1	676-2100	208		010	
8	GASKET	1	364-1016	603		603	
9	IMP. SCREW - L	1	168-0490	113		113	
9A	WASHER - L	1	908-0604	087		087	
9B	GASKET - L	1	364-2035	603		603	
9C	CAPSCREW SEAL - L	1	908-1292	999		999	
11	IMPELLER - L						
	2x12	1	443-1725	225		010	
	3x12	1	443-1726	225		010	
	4x12	1	443-1728	225		010	
	5x12	1	443-1729	225		010	
	6x12	1	443-1730	225		010	
	8x12	1	443-2664	225		010	
11	IMPELLER - L*						
	2x12	1	443-1739	225		010	
	3x12	1	443-1740	225		010	
	4x12	1	443-1742	225		010	
	5x12	1	443-1743	225		010	
	6x12	1	443-1744	225		010	
	8x12	1	443-2977	225		010	
12	IMPELLER KEY - L	1	472-0247	087		087	
14	WEAR RING						
	2x12	1	676-1146	208		010	
	3x12	1	676-1133	208		010	
	4x12	1	676-1140	208		010	

PC. NO.	DESCRIPTION	QTY	PART NO.	MATERIAL			
				B.F.	A.B.	A.I.	S.S.
14	WEAR RING						
	5x12	1	676-1141	208		010	
	6x12	1	676-1143	208		010	
	8x12	1	676-2101	208		010	
15	WEAR RING						
	2x12						
	3x12	1	676-1133	208		010	
	4x12	1	676-1156	208		010	
	5x12	1	676-1156	208		010	
	6x12	1	676-1156	208		010	
	8x12	1	676-1156	208		010	
16	WEAR RING						
17	COUPLING GUARD						
	S	2	392-0684	087		087	
	L	2	392-0683	087		087	
18	GUARD MOUNTING SCREW	8	168-0298	082		082	
27	SEAL - L	1	712-0910	749		749	
31	HEXNUT						
	143HP-256HP	4	544-0109	080		080	
	284HP-405HP	4	544-0115	080		080	
32	CAPSCREW						
	143HP-256HP	4	168-0388	082		082	
	284HP-405HP	4	168-0572	082		082	
33	SCREW	2	708-0013	365		365	
34	NAMEPLATE	1	532-0045	114		114	
35	BRACKET						
	143HP-256HP	1	116-0608	010		010	
	284HP-405HP	1	116-0604	010		010	
40	SHAFT						
	182HP-405HP	1	728-7502	107			
41A,B	RETAINING RING	2	676-0277	088		088	
42	THROTTLE BUSHING						
	182HP-405HP	1	136-1675	560		560	
43	GLAND O-RING	1	364-0423	457		457	
44	GLAND						
	182HP-405HP	1	372-0549	010		010	
45	SPLIT COUPLING						
	143HP-145HP	1	256-2884	320		320	
	182HP-256HP	1	256-2876	320		320	
	284HP-405HP	1	256-2875	320		320	

*MACHINED FOR OPTIONAL RING #14 & 15

380 SERIES
MODELS 382A-SC
2 x 2 x 12 - 8 x 8 x 12

PARTS LIST

PC. NO.	DESCRIPTION	QTY	PART NO.	MATERIAL			
				B.F.	A.B.	A.I.	S.S.
46	ANNULAR RING						
	143HP-145HP	1	472-1165	087		087	
	182HP-256HP	1	472-1164	087		087	
	284HP-405HP	1	472-1163	087		087	
47	ANNULAR RING						
	143HP-405HP	1	472-1162	087		087	
48	CAPSCREW						
	143HP-256HP	6	168-0123	082		082	
	284HP-405HP	6	168-0169	082		082	
49	LOCK WASHER						
	143HP-256HP	6	908-0160	088		088	
	284HP-405HP	6	908-0163	088		088	
50	HEXNUT						
	143HP-256HP	6	544-0107	080		080	
	284HP-405HP	6	544-0113	080		080	
51	STUD	2	808-5155	080		080	
52	WINGNUT	2	544-2298	080		080	
53	SHAFT KEY						
	182HP-405HP	1	472-0319	087		087	
54	SHAFT KEY						
	143HP-145HP	1	472-0203	087		087	
	182HP-256HP	1	472-0241	087		087	
	284HP-405HP	1	472-0326	087		087	
55	CAPSCREW	4	168-0494	082		082	

380 SERIES
MODELS 382A-SC
8 x 8 x 15 - 10 x 10 x 15

SECTION 382P PAGE 11
 DATED DECEMBER 2005

PARTS LIST

PC. NO.	DESCRIPTION	QTY	PART NO.	MATERIAL			
				B.F.	A.B.	A.I.	S.S.
1	COMP. ELBOW	1	868-3360	190		087	
2	COMP. CONNECTOR	1	868-3559	190		087	
3	TUBING	1	872-0124	175		087	
4	PIPE PLUG	5	600-0002	082		082	
5	CAPSCREW	8	168-0636	082		082	
6	CASING						
	8 x 8 x 15	1	180-2595	010		010	
	10 x 10 x 15	1	180-2596	010		010	
7	WEAR RING						
	8 x 8 x 15	1	676-2036	222		010	
	10 x 10 x 15	1	676-2037	222		010	
8	O-RING	1	364-0557	457		457	
9	IMPELLER SCREW	1	168-0490	104		104	
9A	WASHER	1	908-1326	104		104	
9B	GASKET	1	364-2046	603		603	
9C	CAPSCREW SEAL	1	908-1292	118		118	
11	IMPELLER						
	8 x 8 x 15	1	443-3088	208		010	
	10 x 10 x 15	1	443-3090	208		010	
11A	IMPELLER*						
	8 x 8 x 15	1	443-3089	208		010	
	10 x 10 x 15	1	443-3091	208		010	
12	IMPELLER KEY	1	472-0318	087		087	
14	IMPELLER RING(OPT)						
	8 x 8 x 15	1	676-1053	208		010	
	10 x 10 x 15	1	676-1971	208		010	
15	IMPELLER RING(OPT)						
	8 x 8 x 15	1	676-1053	208		010	
	10 x 10 x 15	1	676-1053	208		010	
16	WEAR RING						
	8 x 8 x 15	1	676-2036	222		010	
	10 x 10 x 15	1	676-2036	222		010	
17	COUPLING GUARD	2	392-0685	087		087	
18	GUARD MOUNTING SCREW	8	168-0298	082		082	
27	SEAL	1	712-0917	749		749	
31	HEXNUT						
	284HP-445HP	4	544-0115	080		080	
32	CAPSCREW						
	284HP-445HP	4	168-0572	082		082	
33	U DRIVE SCREW	2	708-0013	365		365	
34	NAMEPLATE	1	532-0045	114		114	
35	BRACKET, 15"						
	284HP-445HP	1	116-0592	010		010	

PC. NO.	DESCRIPTION	QTY	PART NO.	MATERIAL			
				B.F.	A.B.	A.I.	S.S.
40	SHAFT						
	284HP-445HP	1	728-7503	107			
41A,B	RETAINING RING	2	676-0292	088		088	
42	THROTTLE BUSHING						
	284HP-445HP	1	136-1677	560		560	
43	GLAND O-RING	1	364-0432	457		457	
44	GLAND						
	284HP-445HP	1	372-0548	010		010	
45	SPLIT COUPLING						
	284HP-405HP	1	256-2882	320			
	444HP-445HP	1	256-2881	320			
46	ANNULAR RING						
	284HP-405HP	1	472-1163	087		087	
	444HP-445HP		472-1166	087		087	
47	ANNULAR RING						
	284HP-445HP	1	472-1166	087		087	
48	CAPSCREW	6	168-0169	082		082	
49	LOCK WASHER	6	908-0163	088		088	
50	HEXNUT	6	544-0113	080		080	
51	STUD	2	808-0110				
52	WINGNUT	2	544-2299	080		080	
53	SHAFT KEY						
	182HP-405HP	1	472-1167	087		087	
54	SHAFT KEY						
	284HP-405HP	1	472-0325	087		087	
	444HP-445HP	1	472-0358	087		087	
55	CAPSCREW	4	168-0494	082		082	

NOTE:
Aurora Pump reserves the right to make revisions to its products and their specifications, and to this bulletin and related information without notice



Aurora Pump
800 Airport Road
North Aurora, IL 60542
phone: 630-859-7000
fax: 630-859-7060