

SERIE 320

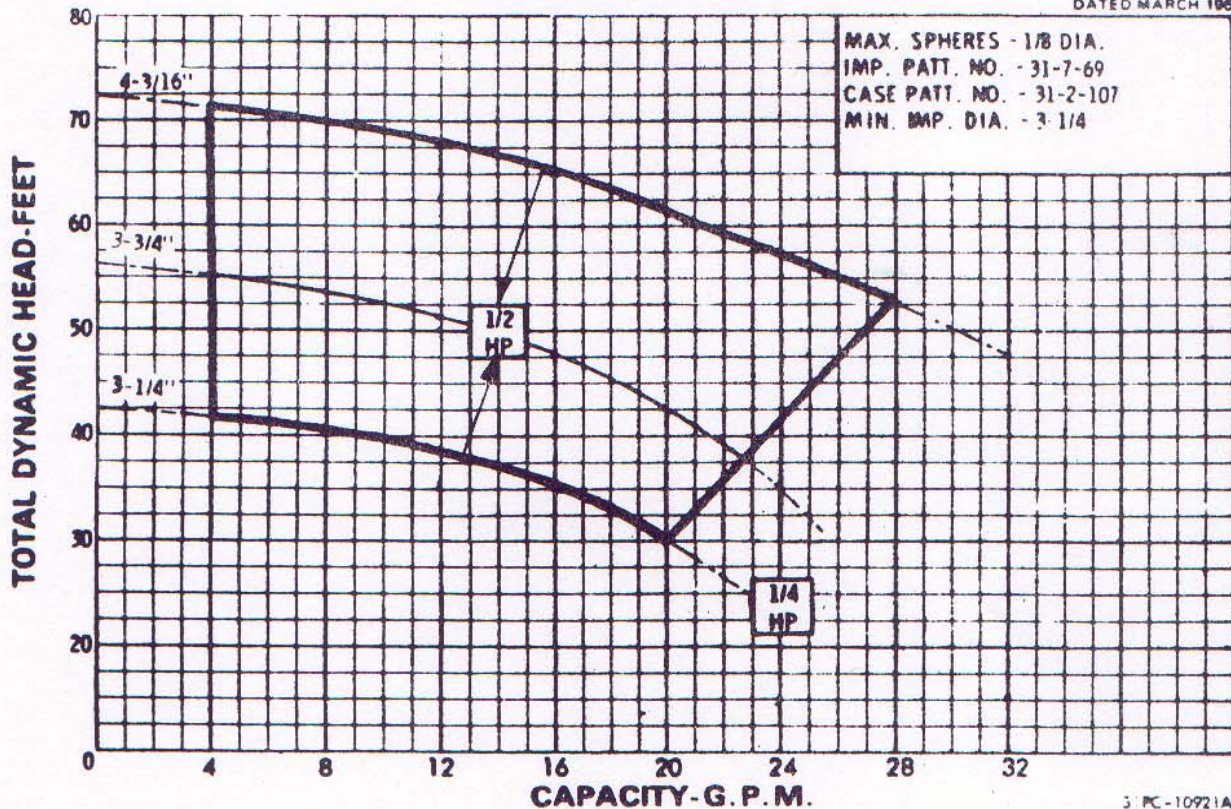
$\frac{3}{4} \times 1 \times 4 - \frac{1}{4}$
$\frac{3}{4} \times 1 \times 6$
$\frac{3}{4} \times 1 \times 7A$

3/4 x 1 x 4-1/4 SERIES 320 ENCLOSED IMPELLER

SECTION 320 PAGE 401

DATED APRIL 1978

SUPERSEDES PAGE 401
DATED MARCH 1966

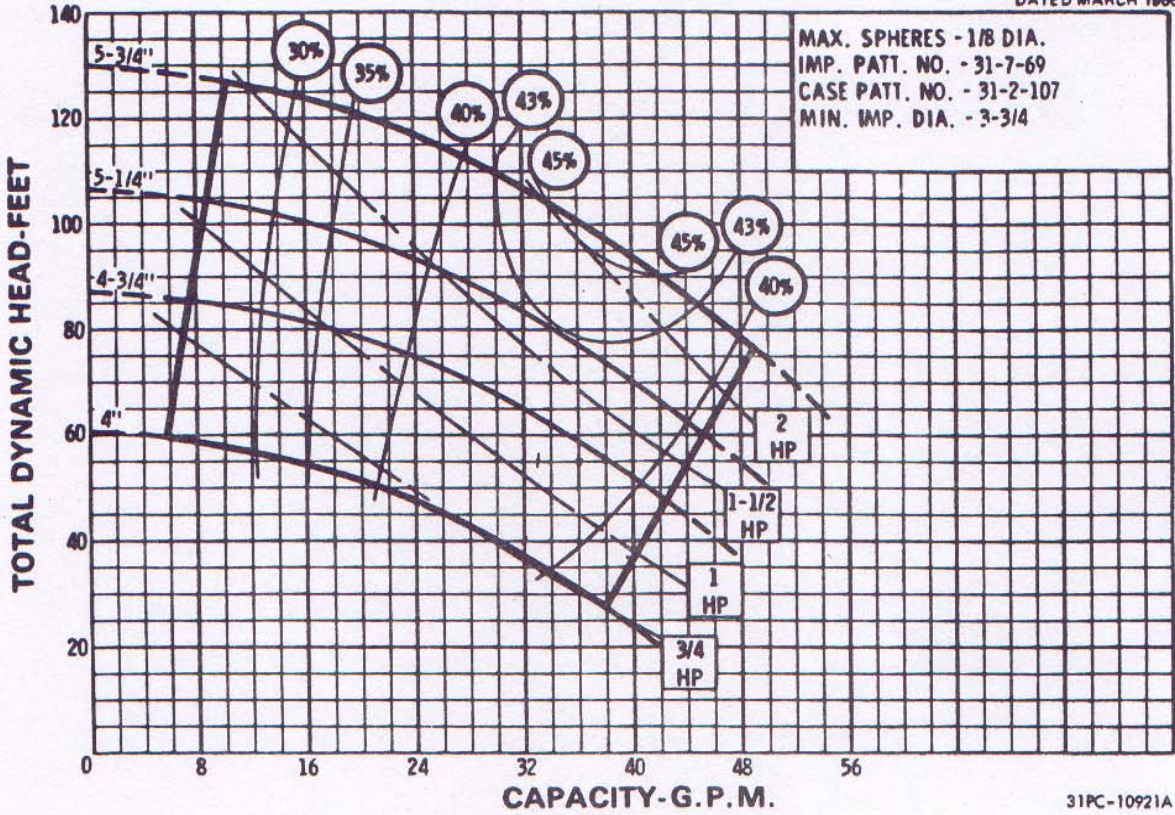


AURORA PUMP

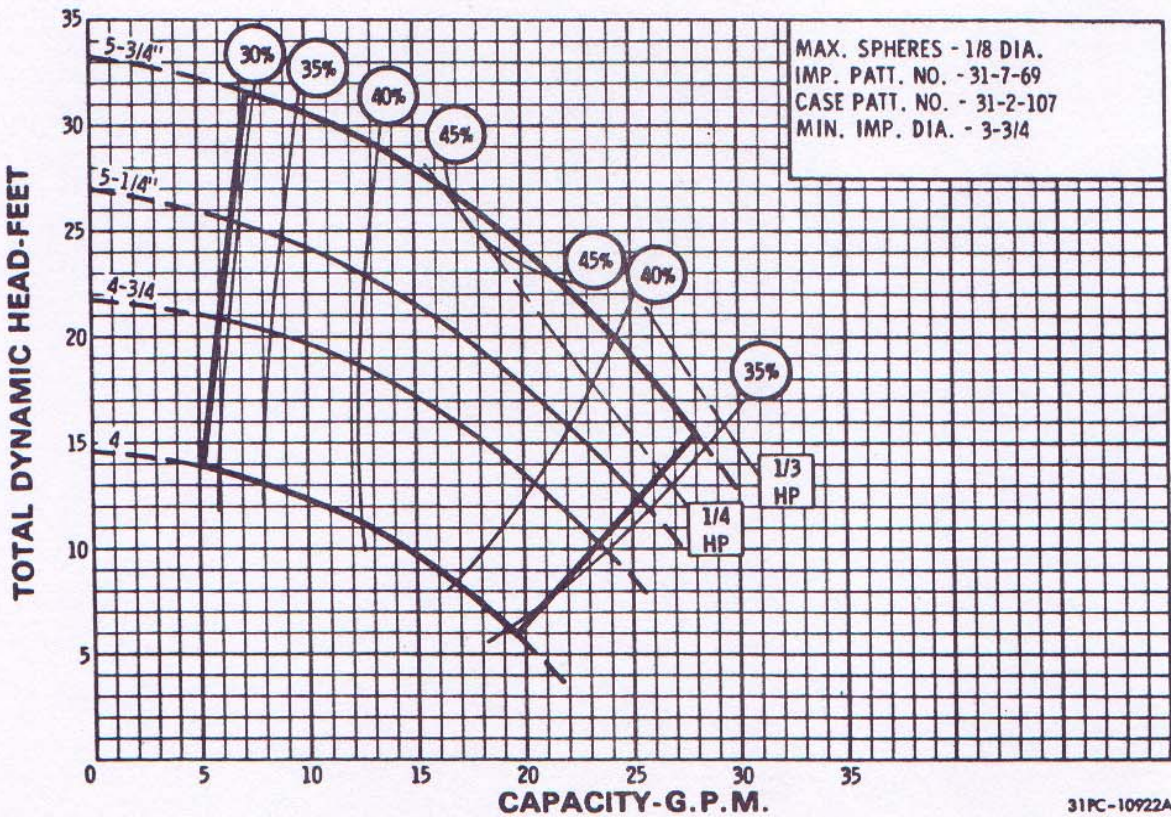
A UNIT OF GENERAL SIGNAL

800 AIRPORT ROAD · NORTH AURORA, ILLINOIS · 60142

3/4x1x6 SERIES 320 ENCLOSED IMPELLER



3500
R.P.M.



1750
R.P.M.



AURORA PUMP
A UNIT OF GENERAL SIGNAL
800 AIRPORT ROAD • NORTH AURORA, ILLINOIS • 60542

3/4 x 1 x 7A SERIES 320

ENCLOSED IMPELLER

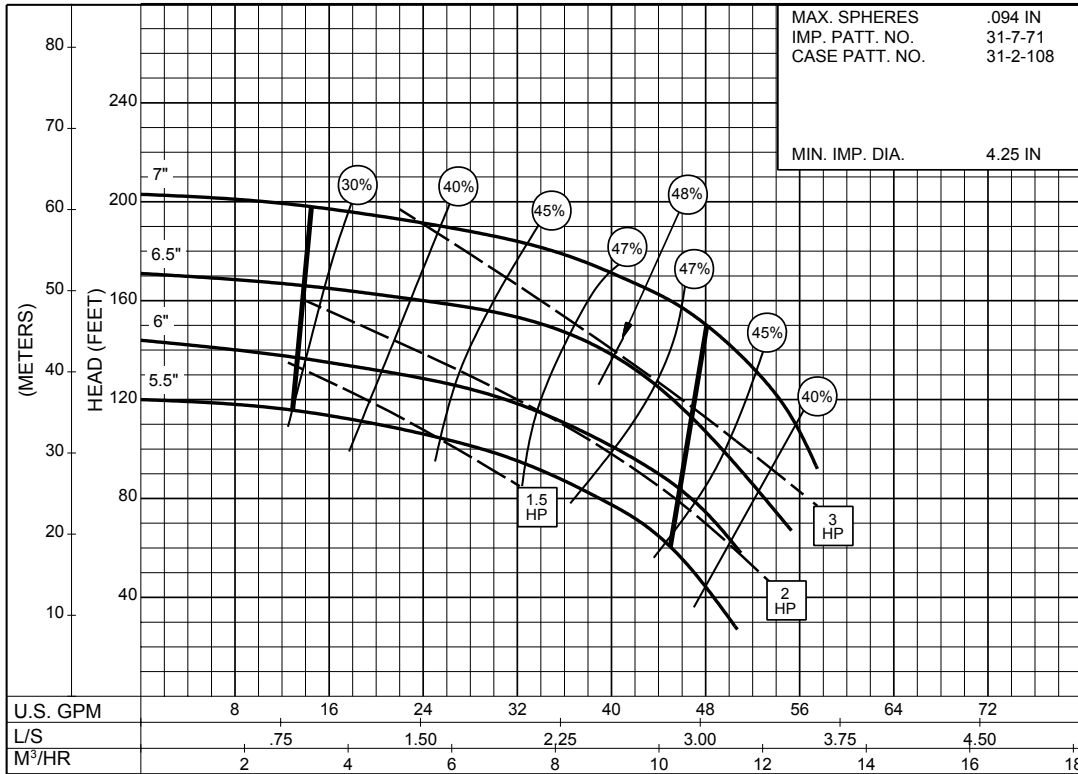
SIZE : 3/4x1x7A

TYPE : 320

IMPELLER : Enclosed

R. P. M. : 3500

MAX. SPHERES	.094 IN
IMP. PATT. NO.	31-7-71
CASE PATT. NO.	31-2-108
MIN. IMP. DIA.	4.25 IN



3500
R.P.M

31 PC-10929